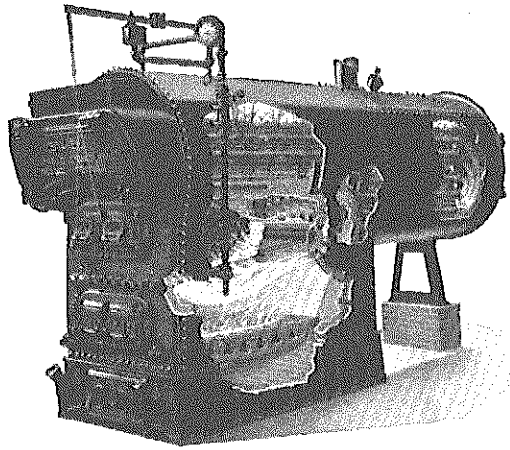


# Kewanee Smokeless Portable Boiler



The Kewanee Smokeless Portable firebox heating boiler eliminates brick setting. Built of riveted steel, it goes into the building in one piece. Any kind of coal is burnt smokelessly and the extreme heat of burning oil is developed and absorbed with high efficiency by the large water content kept in rapid circulation by the water grate.

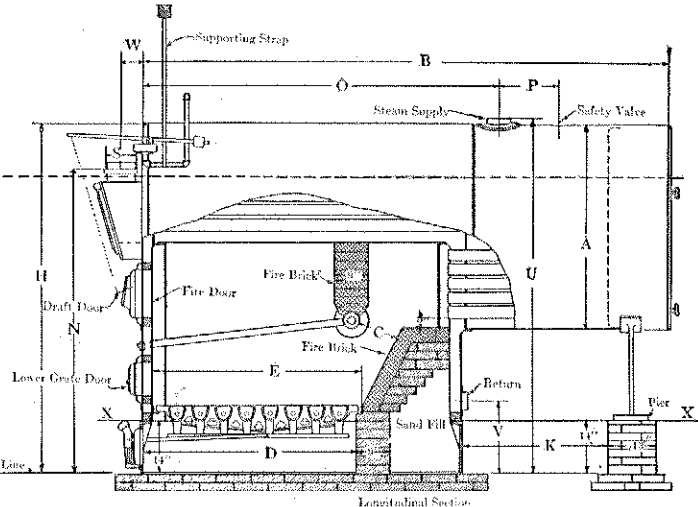
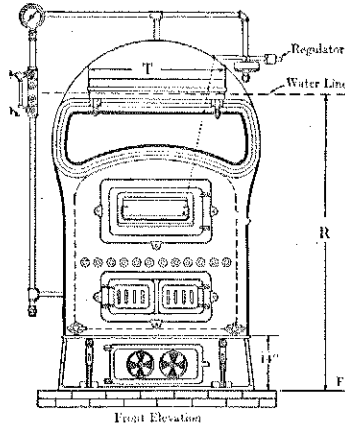
Boiler No. 314 (and smaller) constructed with enlarged cylinder. Iron ash pit furnished with Boiler No. 309 (and smaller). Boiler No. 310 (and larger) set on brick foundation. Manholes are provided on 54-inch boilers and larger.

## Section Kewanee Smokeless Portable Boiler

Nos. 307-309 have bell top and cast iron base as shown above.

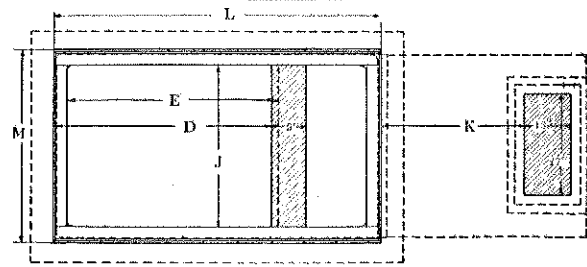
Nos. 310-314 have bell top and brick base.

Nos. 315-324 with brick base as shown on opposite page.



## Section Kewanee Smokeless Boiler Showing Portable Type Setting Plan Boilers Nos. 307-314

Note—Boilers Nos. 310, 311, 312, 313 and 314 are constructed with bell top as shown above, but are set on brick foundation instead of cast iron base as shown. Manhole is located in rear head.



### Specifications

Number of Boiler	307	308	309	310	311	312	313	314	315	316	317	318	319	320	321	322	323	324
Capacity, Steam... Sq. Ft.	3390	4260	5020	6100	6950	7650	8290	9000	10100	10820	12770	14740	16860	18420	20410	21690	29040	36810
Capacity, Water... Sq. Ft.	5420	6820	8030	9760	11120	12240	13260	14400	16160	17310	20430	23580	26980	29470	32660	34700	46460	58900
Oil, Gas or Stoker:																		
Capacity, Steam... Sq. Ft.	5050	5990	6650	7580	8430	9290	10070	10920	12260	13130	15500	17900	20460	22360	24800	26350	35300	44700
Furnace Volume... Cu. Ft.	51.8	58.1	64.3	82.1	89.4	96.9	114.9	124.4	152.1	164.0	181.0	193.9	231.2	256.0	272.5	367.8	468.9	
Approx. Weight... Pounds	7300	8000	8600	9600	10200	10900	13300	14000	15500	16200	19300	21100	23100	24400	26600	27800	34300	40000
Approximate Weight, Pounds	7800	8600	9300	10400	11100	11900	14500	15300	16900	17800	20900	22900	25000	26500	28800	30000	37000	43000
Diameter of Boiler... Inches	48	48	48	54	54	54	60	60	60	60	66	66	72	72	78	78	84	84
Lgth. Boiler Overall... Ft. In.	9-1	10-5	11-5	10-11	11-11	12-11	12-11	13-11	15-3	16-3	15-9	17-9	16-7	17-11	17-10	18-10	20-1	24-1
Width of Fire-box... Inches	36	36	36	42	42	42	48	48	53	53	59	59	65	65	71	71	77	77
Length of Fire-box... Inches	54	60	66	72	78	84	78	84	90	96	90	96	96	102	102	108	114	120
Heating Surface... Sq. Ft.	297	352	391	446	496	546	592	643	721	773	912	1053	1204	1316	1458	1549	2074	2629
Area of Upper Grate... Sq. Ft.	8.8	10.1	11.4	12.9	14.7	16.5	17.1	18.5	20.0	21.4	23.5	25.9	28.5	29.9	32.6	34.6	41.7	44.8
Diam. of Breeching... Inches	22	22	22	24	24	24	26	26	28	28	30	32	34	34	36	36	40	42
Diameter of Stack... Inches	20	20	20	22	22	22	24	24	26	26	28	30	32	32	34	34	38	40
Min. Height of Stack... Feet	50	55	55	55	55	60	60	60	65	65	65	70	70	70	80	90	90	100
Diameter of Breeching, Two Boilers... Inches	30	30	30	34	34	34	38	38	40	40	44	46	50	50	52	52	56	56
Diameter of Stack, Two Boilers... Inches	28	28	28	31	31	31	34	34	36	36	40	42	46	46	48	48	54	54
Minimum Height of Stack, Two Boilers... Feet	60	65	65	65	65	70	70	70	75	75	75	80	80	80	90	100	100	110
Size of Steam Opening, Inches	6	6	6	6	6	6	8	8	8	8	8	8	8	8	8	8	10	10
Size of Return... Inches	4	4	4	4	4	4	5	5	5	5	6	6	6	6	6	6	6	6
Size of Safety Valve... Inches	2	2	2	2	2½	2½	3	3	3	3½	3½	4	4	4	4	4	4	4
Height of Water-line... Inches	71	71	71	76	76	76	83	83	87	87	90	90	96	96	97	97	105	105
Height Floor to Top of Shell... Inches	84	84	84	89	89	89	98	98	101	101	107	107	113	113	115	115	121	121
Distance Required to Open Rear Flue Doors, In.	26	26	26	28	28	28	32	32	32	32	35	35	37	37	40	40	43	43

Rated Capacity for Water Boiler, 60% Greater than Steam.