

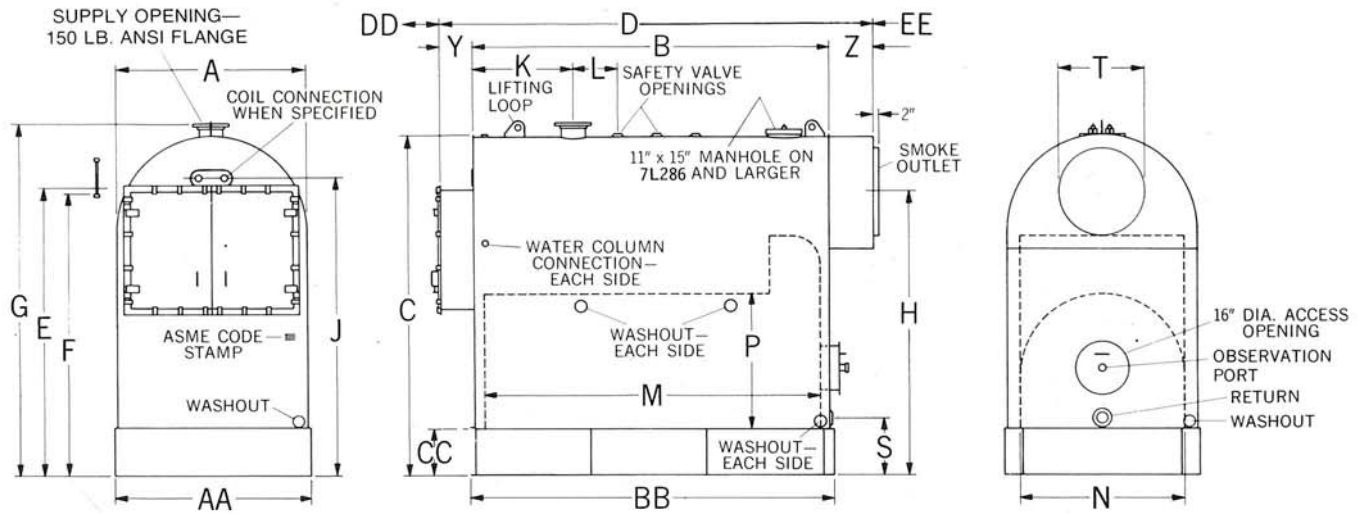
- ASME Code Constructed Boiler for 15 psi Steam or 30 psi Water Working Pressure.
- Three pass design extracts maximum heat from gases, assures high operating efficiency while maintaining low stack temperature . . . Second pass is rear to front through direct fire tubes . . . the third from front to rear in return tubes.
- Large firebox with self-cleaning, arched, upright crown sheet allows thorough mixing of fuel and air, giving complete combustion before the hot gases enter the firetubes.
- All heating surfaces are accessible, reducing inspection and maintenance costs. No refractory baffles to burn out causing short circuiting of gases, nor expensive replacement costs. 3" boiler tubes are roller expanded.
- Water content is ample — and steam space is proportioned for plenty of dry steam. That's why over all efficiencies of 80% and more are not uncommon with the Kewanee Type "C" and are maintained continuously in actual practice.
- Twelve sizes range in gross outputs from 2,160,000 to 14,380,000 Btuh or 65 to 430 hp.
- Boilers furnished with standard trim, safety valve(s), steam gauge, Kewanee water column with water gauges and tri cocks for steam. Standard water trim consists of relief valve(s).

If any heating boiler has ever earned and won the right to become known as "the standard of the industry," the now familiar and popular Kewanee Type "C" Boiler, first introduced into the market in 1928, has been accorded this recognition by engineers everywhere. Unmatched for its dependability and efficient service, these compact boilers provide reliable heating for many years with minimum service or attention.

Ratings and Data

BOILER NUMBER		7L280	7L281	7L282	7L283	7L284	7L285	7L286	7L287	7L288	7L289	7L290	7L291
Gross output—steam	sq. ft.	9000	10495	12762	15004	18745	22508	26225	29987	37491	44991	52475	59954
	—water	sq. ft.	14400	16793	20420	24006	29993	36013	41960	47980	59986	71987	83960
Steam per hour—212°F	MBh.	2160	2519	3063	3601	4499	5402	6294	7197	8998	10798	12594	14389
	lb.	2226	2596	3156	3712	4636	5567	6487	7417	9273	11129	12979	14829
Net rating—steam	sq. ft.	6988	8149	9909	11649	14554	17475	20361	23282	29108	34931	40742	46548
	MBh.	1677	1956	2378	2796	3493	4194	4887	5588	6986	8384	9778	11172
	—water	MBh.	1878	2190	2663	3131	3912	4697	5473	6258	7824	9390	10951
Certified output—	hp.	78	92	111	131	164	195	228	261	326	392	456	521
	MBh.	2625	3060	3718	4374	5464	6559	7650	8745	10929	13114	15300	17485
Firing rate	—150,000 Btu oil	gph.	22	26	31	37	46	54	64	73	91	110	127
	—Gas	MBh.	3280	3830	4650	5460	6840	8200	9560	10920	13670	16400	19120
	—13,000 Btu coal stoker	lbs. per hr.	269	313	381	448	560	672	784	896	1120	1345	1569
Heating surface—waterside	sq. ft.	429	500	608	715	893	1072	1250	1429	1786	2143	2500	2857
	—fireside	sq. ft.	397	463	563	662	827	993	1157	1323	1654	1985	2315
Furnace volume—SBI minimum	cu. ft.	52.1	60.8	73.8	86.8	108.5	130.2	151.8	173.5	216.9	260.3	303.6	346.9
	—net	cu. ft.	65.7	75.2	91.0	104.8	130.6	154.2	189.3	214.4	256.1	303.4	379.5
Water content—steam boiler	lb.	3655	4265	5130	6020	7240	8640	9155	10835	12730	15470	20683	23135
	—water boiler	lb.	5055	5880	7030	8230	9490	11310	12480	14610	17145	20735	26604
Safety valve cap	lb. steam per hr.	3432	4000	4864	5720	7144	8756	10000	11432	14288	17144	20000	22856

KEWANEE
TYPE "C" BOILER



DIMENSIONS -- Inches

BOILER NUMBER	7L280	7L281	7L282	7L283	7L284	7L285	7L286	7L287	7L288	7L289	7L290	7L291
Shell Diameter—Inside	48"	48"	54"	54"	60"	60"	66"	66"	78"	78"	86"	86"
A—Boiler—width	50½	50½	55½	55½	61½	61½	67½	67½	79½	79½	88	88
B—length	87	100½	93½	109	109	129½	128	145	130	154½	145½	165
C—height	91½	91½	103	103	113½	113½	122	122	136	142	162½	167½
D—length overall	113	126½	120½	136	137	157½	156	173	164	188½	179½	199
E—Water line height	78	78	87½	87½	98½	98½	105	105	116½	122½	139½	145½
F—Water column height	76	76	85½	85½	96½	96½	103	103	114½	120½	137½	143½
G—Steam supply height	96½	96½	108	108	118½	118½	127	127	142	148	168	174
H—Smoke outlet height	75½	75½	85	85	94½	94½	101	101	113½	119½	136	142
J—Coil connection height (optional)	80½	80½	90	90	101	101	107	107	119	125	142	148
K—Steam supply	36	36	36	36	36	36	36	36	36	36	36	36
L—Safety valve***	14	18	18	18	14	16	16	16	16	16	16	16
M—Firebox—length	80½	94	87	102½	101½	122	120	137½	122	147	136½	156
N—width	42½	42½	48½	48½	53½	53½	59	59	71	71	77	77
P—height	34	34	37½	37½	43	43	48¾	48¾	54½	60½	66	71¾
S—Return height	18	18	18	18	21	21	21	21	23	23	27	27
T—Smoke outlet dia.	24	24	28	28	30	30	31	31	39	39	43	43
Y—Smokebox depth—front	11	11	12	12	12	12	12	12	14	14	14	14
Z—rear	15	15	15	15	16	16	16	16	20	20	20	20
AA—Base—width	52	52	58	58	64	64	70	70	82	82	90	90
BB—length	90½	104	97	112½	112½	133	131½	148½	133½	158	149	168½
CC—height	14	14	14	14	17	17	17	17	17	17	21	21
DD—Tube replacement space—front	77	90½	82½	98	98	118½	117	134	117	141½	132½	152
EE—rear	73	86½	79½	95	94	114½	113	130	111	135½	126½	146
Steam supply size*	8	8	8	8	8	8	8	8	10	10	10	12
Return size	4	4	4	4	4	4	4	4	6*	6*	6*	6*
Outside surface to cover** sq. ft.	145	162	182	205	227	255	275	310	355	405	460	490
Approximate dry weight lbs.	6600	7300	8500	9500	11400	13000	15800	17400	21100	24700	29700	33800
Breeching diameter—one boiler	24	24	28	28	30	31	35	35	39	41	43	46
Stack—diameter	21	22	24	26	28	29	31	33	36	38	40	42
—height	ft. 50	60	55	65	65	70	65	75	90	80	100	100
Breeching diameter—two boilers	30	31	34	36	40	41	44	47	50	54	56	60
Stack—diameter	28	29	32	34	37	38	41	44	47	50	52	56
—height	ft. 60	70	65	75	75	80	75	85	100	90	110	110

*150 lb. ANSI flange

**Includes front head and smokebox

***One or more valves furnished depending on required capacity



KEWANEE

Boiler Parts Supplied by Cici Boiler Rooms, Inc.

www.kewaneeparts.com

1-800-848-8197

KBC-31-8/73-10M-IP